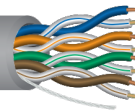


PART NUMBER CAT5-GRY

UL Listed and Rated Type CMG or CMR, ETL Verified Non-Plenum Category 5e Cable

■ 0275/0725 FT ●

ABCDE0123456789



CABLE SPECIFICATIONS

DESCRIPTION	24 AWG Category 5e Unshielded Twisted Pair (UTP) Cable For Data Transmission up to 350MHz. This Cable is Non-Plenum Rated and Verified to Category 5e Electricals
CONDUCTOR	24 AWG Solid Bare Copper
INSULATION	PE
COLOR CODE	Pair 1: White-Blue/Blue, Pair 2: White-Orange/Orange, Pair 3: White-Green/Green, Pair 4: White-Brown/Brown
SHIELD	N/A
DRAIN WIRE	N/A
JACKET	PVC; OD: .205" Nom.
JACKET COLOR	Gray Jacket
MARKING	A B C D E 0 1 2 3 4 5 6 7 8 9 4PR CAT 5E ENHANCED (ETL) OR C(ETL) 24 AWG 350 MHZ CMR VERIFIED TO TIA/EIA 568B.2 WINDY CITY WIRE
OVERALL DIAMETER	.205" Nom.
CABLE WEIGHT	25 Lbs/Mft.
CAPACITANCE	17 pF/ft.
IMPEDANCE	100 Ohms +- 15%
DC RESISTANCE	9.38 Ohms/100m (28.6 Ohms/kft) Max.
TEMPERATURE RATING	-20 C to +60 C / 300 Volt
VOLTAGE RATING	300 Volts

INDUSTRY STANDARDS

AGENCY APPROVALS Type CMG/CMR Communication Cable, C(ETL), ETL Verified to TIA/EIA 568B.2



All specifications referenced are nominal measurements unless otherwise noted.