

PART NUMBER 5556166

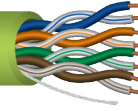
ETL Listed and Rated Type CMP Multi-Pair Non-Shielded Plenum Category 5e Cable

■ 0275/0725 FT ●

SMARTWIRE(TM)

DEVICE/ZONE

A B C D E 0 1 2 3 4 5 6 7 8 9



CABLE SPECIFICATIONS

DESCRIPTION	24 AWG Category 5e Unshielded Twisted Pair (UTP) Cable for Data Transmission up to 350 MHz. This cable is Plenum Rated and Verified to Category 5e Electricals
CONDUCTOR	24 AWG Solid Bare Copper
INSULATION	FEP
COLOR CODE	White-Blue/Blue, White-Orange/Orange, White-Green/Green, White-Brown/Brown
JACKET	Low-Smoke PVC
JACKET COLOR	Neon Green Jacket
MARKING	* 1000/0000 * A B C D E 0 1 2 3 4 5 6 7 8 9 UTP 4/24 C(ETL)US CMP VERIFIED (ETL) CAT5E 5013896 350 MHZ TIA-568-C.2 WINDY CITY WIRE MADE IN USA
OVERALL DIAMETER	.175" Nom.
CABLE WEIGHT	24 Lbs/Mft.
CAPACITANCE	5.6 nF/100 Meters @ 1 kHz
IMPEDANCE	100 +/- 15 Ohms (0.772-100.0 MHz)
DC RESISTANCE	9.38 Ohms / 100 Meters @ 20 C
TEMPERATURE RATING	60 C / 300 Volt
VOLTAGE RATING	300 Volts
INDUSTRY STANDARDS	
FLAME RATING	Approved For Plenum Use Without Conduit Per NFPA 262 Flame Test
AGENCY APPROVALS	ETL Listed Type CMP, Verified to ANSI/TIA 568-C.2 UTP Category 5E



All specifications referenced are nominal measurements unless otherwise noted.



WINDY CITY WIRE • T 800.379.1191 • windycitywire.com

© Windy City Wire, Cable Technology & Products, LLC. All rights reserved.